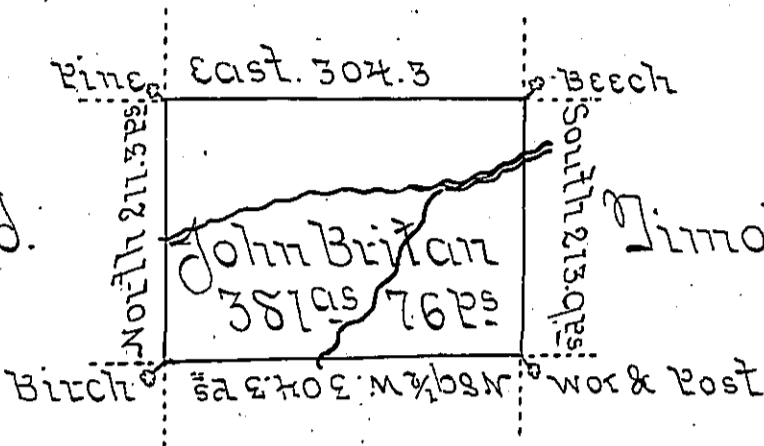


George Emlen

Solomon Cord.



Timothy Alden

Joseph Mearns

In Pursuance of a warrant for 400 acres dated the 18<sup>th</sup> day of April 1792 granted to John Britan was surveyed on the 10<sup>th</sup> day of July 1820 the above described tract of land containing 381<sup>as</sup> 76<sup>ps</sup> perches and allowance of six percent for roads &c situated in Sadsbury Township Crawford County and at the time of making the same Sheldon Shearwood was residing thereon and there was built a house fit for the habitation of man and there appeared to be upwards of 40 acres of the land cleared, fenced and in a state of cultivation.

To Jacob Spangler Esquire  
 Surveyor General,  
 Land Office Pa.

James Herrington JP SE

IN TESTIMONY that the above is a copy of the original remaining on file in the Department of Internal Affairs of Pennsylvania, made conformably to an Act of Assembly approved the 16th day of February, 1833, I have hereunto set my Hand and caused the Seal of said Department to be affixed at Harrisburg, this — second — day of — February — 1907.

*James P. Brown*  
 Secretary of Internal Affairs.